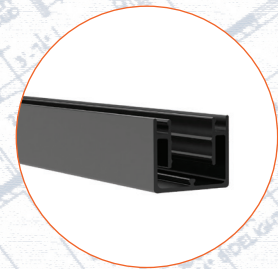
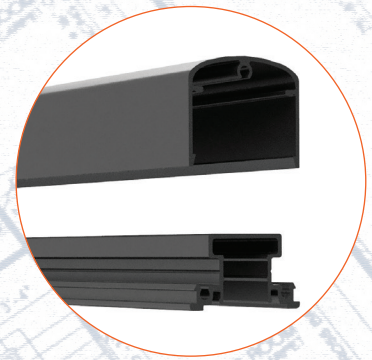
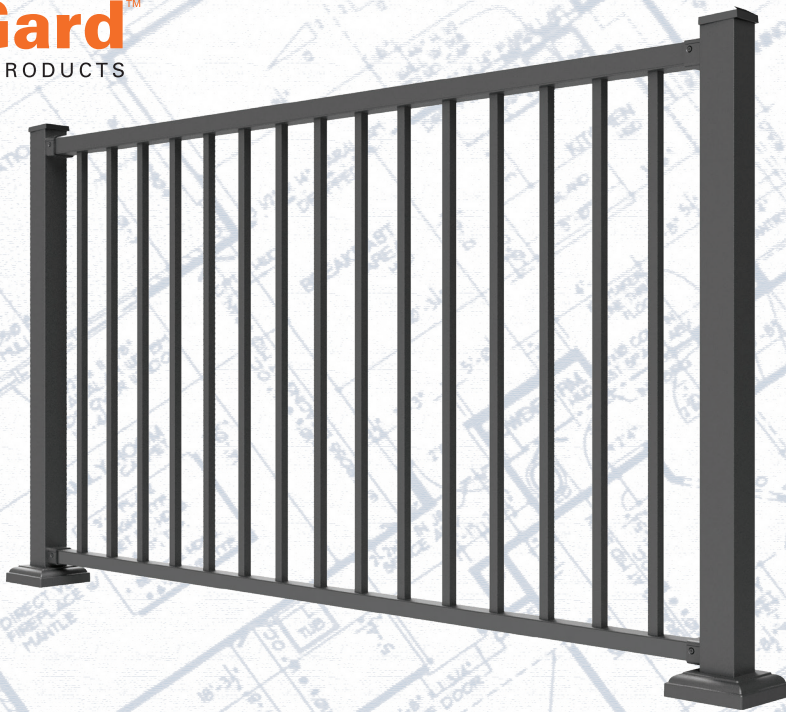


ELITE

COREGard™
ARCHITECTURAL PRODUCTS



CORErailing™ - ASSEMBLED PANEL RAILING SYSTEMS

The **Elite CORErailing Aluminum Railing System** delivers the perfect combination of style and strength. Crafted from high-quality aluminum and powder-coated to the highest standards, it provides long-lasting durability with virtually no upkeep. It will not rust, warp, crack, or require painting, and it stands up beautifully to the elements year after year. CORErailings are powder coated to exceed AAMA 2604 standards for superior durability. The modern, post to post design complements any property. CORErailing is assembled for easy installation and cost effectiveness. All CORErailings are backed by a limited lifetime warranty.

- **Assembled Panels for Easy Installation**
- **IBC- Chapter 16/ASCE-7LIFE SAFTEY Testing**
- **Engineered for TESTED Performance**
- **3-Part Submittals Available**
- **Residential, Commercial and Multi-Family Applications**



Buy American, Be American™ 

1.800.783.1331

www.EliteFence.com



CORErailing™ - ASSEMBLED RAILING SYSTEMS



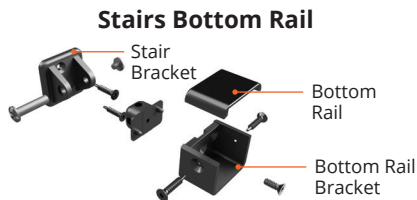
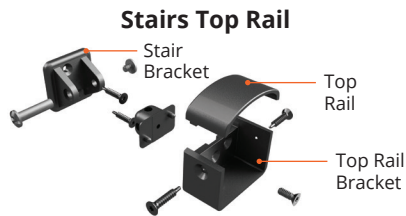
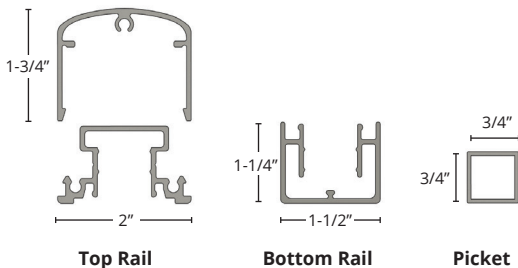
CORErailing Specs*:

Width:	2', 4', 5' and 6'
Heights:	42" Commercial (36" Optional)
Horz. Rails:	Top - 2" (.195") w x 1.75" h Bottom - 1.5" w x 1.25" h
Posts:	2", 2.5", 3.0" and 4.0" Wall with Varying Wall Thickness
Pickets:	3/4" x 3/4" x .050" Wall
Picket Spacing:	3.75"
Min. Strength:	35,000 psi
Alum. Alloy:	6005-T5 Alloy (Rails & Posts)

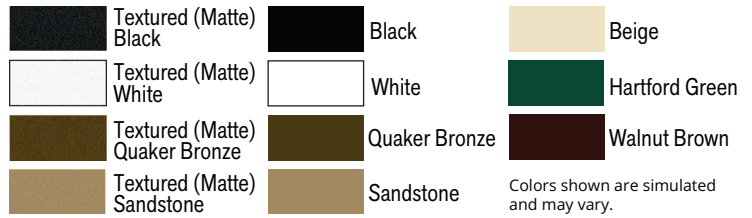
Matching Walk and Drive Gates are also available.

CORErailing Profiles:

Both Profiles are Available for Continuous Top Installation

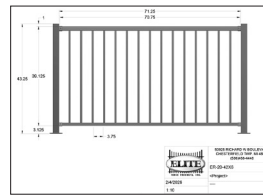


CORErailing Colors:

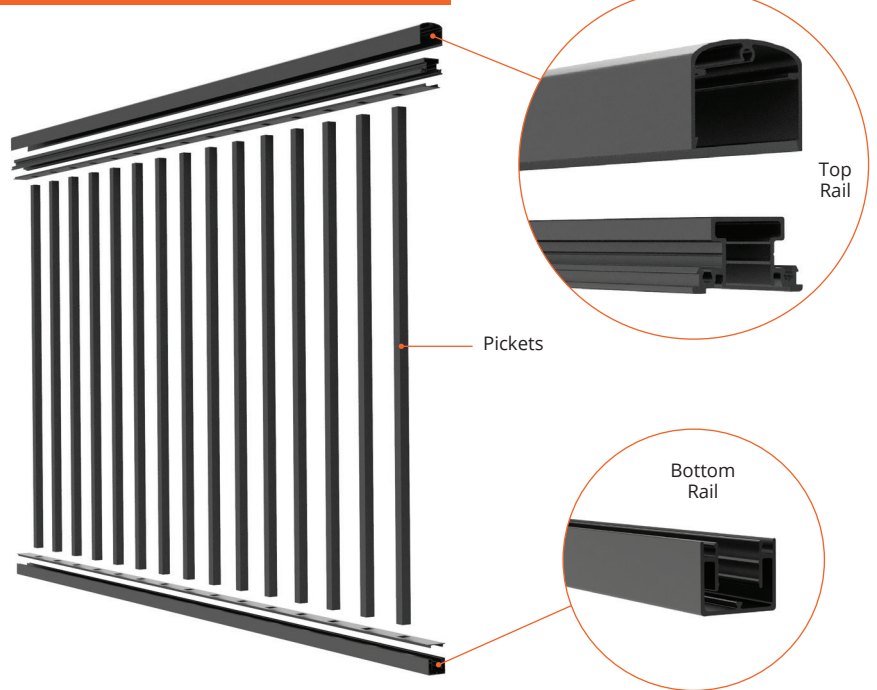


CORErailing Resources:

Specifications, Drawings, Testing/Engineering, Brochure and Warranty



CORErailing Components:



ECO-FRIENDLY



WIND/WEATHER RESISTANT



POWDER COATED AAMA 2604-05



LOW MAINTENANCE



LIMITED LIFETIME WARRANTY



BUY AMERICAN BE AMERICAN



50925 Richard W. Blvd. | Chesterfield Twp., MI 48051

Phone (586) 468-4448 | Fax (586) 468-4884

1.800.783.1331 | www.EliteFence.com