

# ELITE

**COREGard™**  
ARCHITECTURAL PRODUCTS

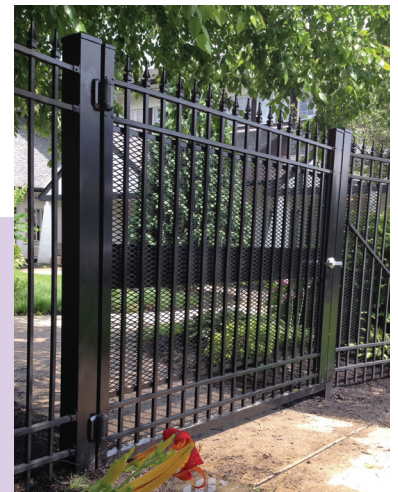


## ENTRYGard™ – ENGINEERED GATE/DOOR SYSTEMS

When safety and security are critical, **Elite's ENTRYGard** gate/door systems provide reliable, high-performance solutions. As part of the **Elite COREGard Architectural Products** brand of **Elite Fence Products**, ENTRYGard pedestrian gates are constructed from heavy-duty aluminum components designed to withstand demanding environments and climates. These doors/gates ship fully assembled and are available with pre-installed commercial-grade door hardware and various configurations of protective mesh.

Built for long-term durability, ENTRYGard railings resist rust, warping and cracking, eliminating the need for painting or ongoing maintenance. Each system is powder coated to exceed AAMA 2604 standards, ensuring exceptional finish performance. ENTRYGard doors/gates are engineered for critical infrastructure and are rigorously tested and backed by a limited warranty.

- **Engineered & Tested for Performance**
- **Multiple Hardware Options Available**
- **3-Part Submittals Available**
- **Applications Include: Municipal Buildings, Schools & Universities, Stadiums & Entertainment Complexes, Data Centers & Utility Companies, Apartment and Assisted Living Properties**



**Buy American, Be American™** 

1.800.783.1331

[www.EliteFence.com](http://www.EliteFence.com)



# ENTRYGard™ GATE/DOOR SYSTEMS



## ENTRYGard Specs:

Width:	Custom
Heights:	Custom
Min. Strength:	35,000 psi
Alum. Alloy:	6005-T5 Alloy (Rails & Posts)
Other:	Available as Single and Double Gates/Doors and Left or Right Hand Swing

## ENTRYGard Colors:

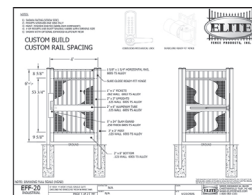
	Textured (Matte) Black		Black		Beige**
	Textured (Matte) White		White		Hartford Green**
	Textured (Matte) Quaker Bronze		Quaker Bronze		Walnut Brown**
	Textured (Matte) Sandstone		Sandstone**		

Colors shown are simulated and may vary.

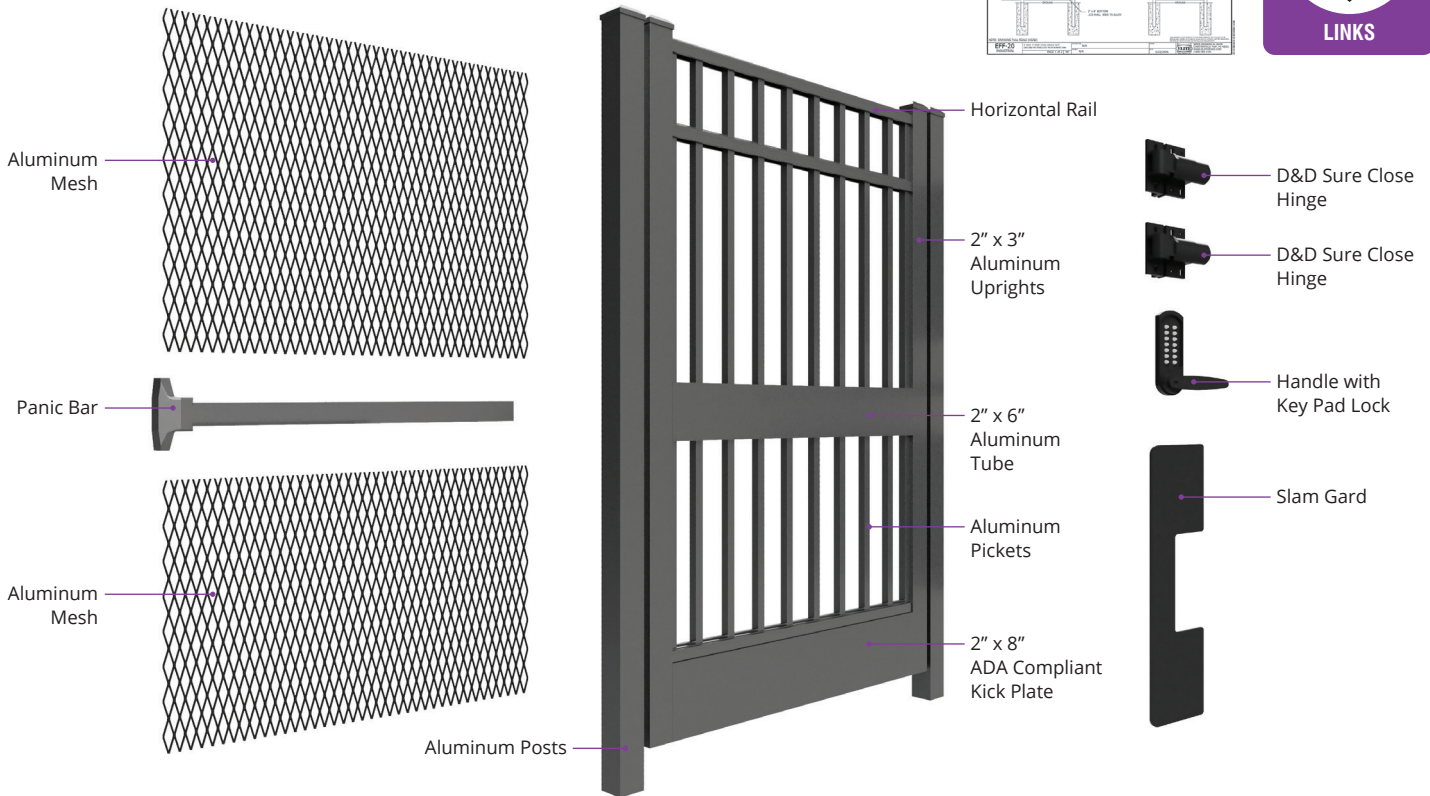
\*\*These colors have extended lead times

## ENTRYGard Resources:

Specifications, Drawings, Testing/Engineering, Brochure and Warranty



## ENTRYGard Components:



ECO-FRIENDLY



WIND/WEATHER RESISTANT



POWDER COATED AAMA 2604-05



LOW MAINTENANCE



LIMITED LIFETIME WARRANTY



BUY AMERICAN BE AMERICAN



50925 Richard W. Blvd. | Chesterfield Twp., MI 48051

Phone (586) 468-4448 | Fax (586) 468-4884

1.800.783.1331 | [www.EliteFence.com](http://www.EliteFence.com)